

DP 7121[®]

DIVISION

PART OF THE

STONE ESTATE

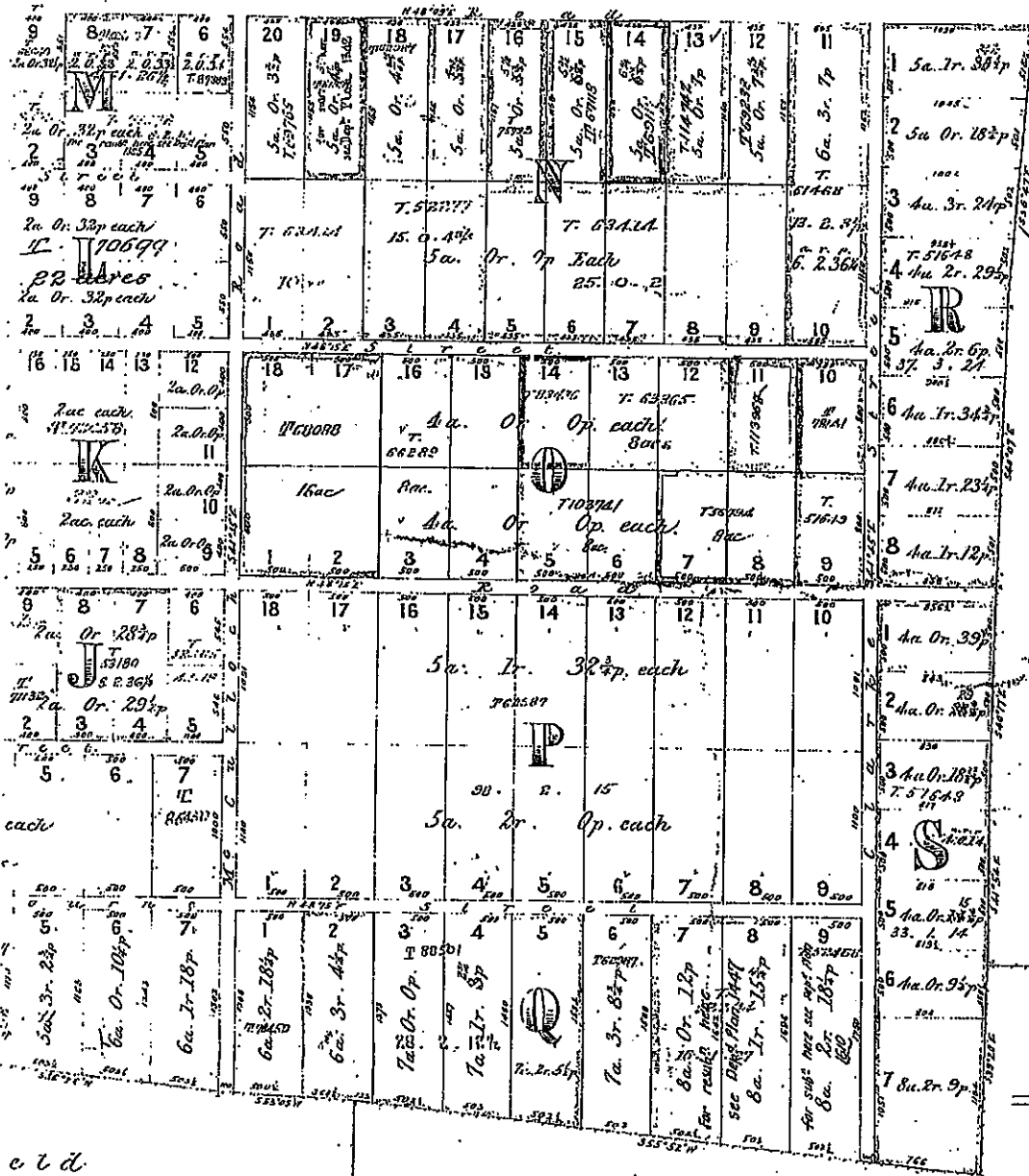
COPY MADE 8.11.1969
EXAMINED G.B.M.

Plan of the Stone Estate 27th March 1964

Ph. Gidley
Co. Cumberland

712

For sub here see Dept Plan 1453



100 y

R o u s e

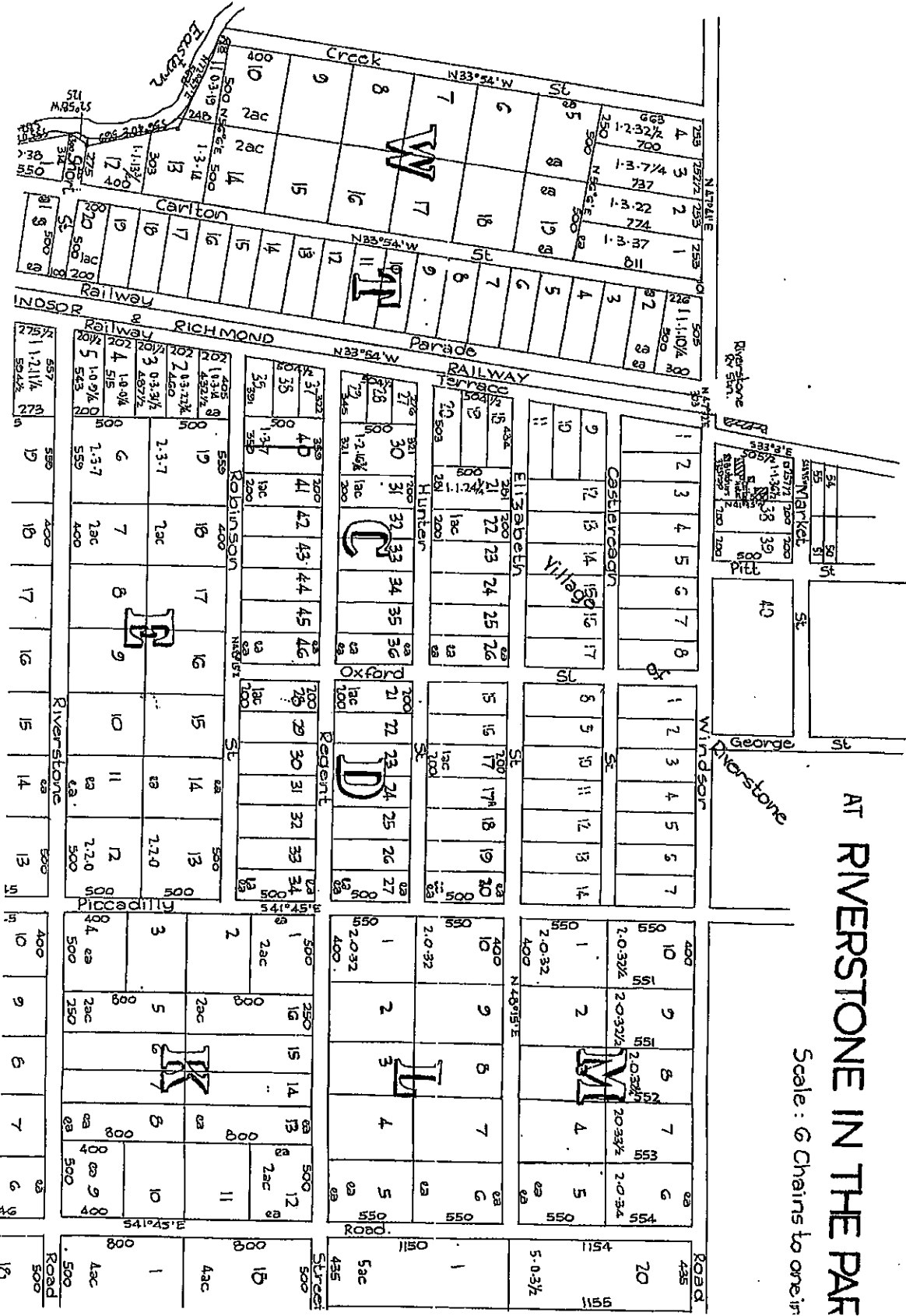
DP 712[®]

et d

H d

REPRODUCED BY THE ARCHIVES

DP 712 (E)



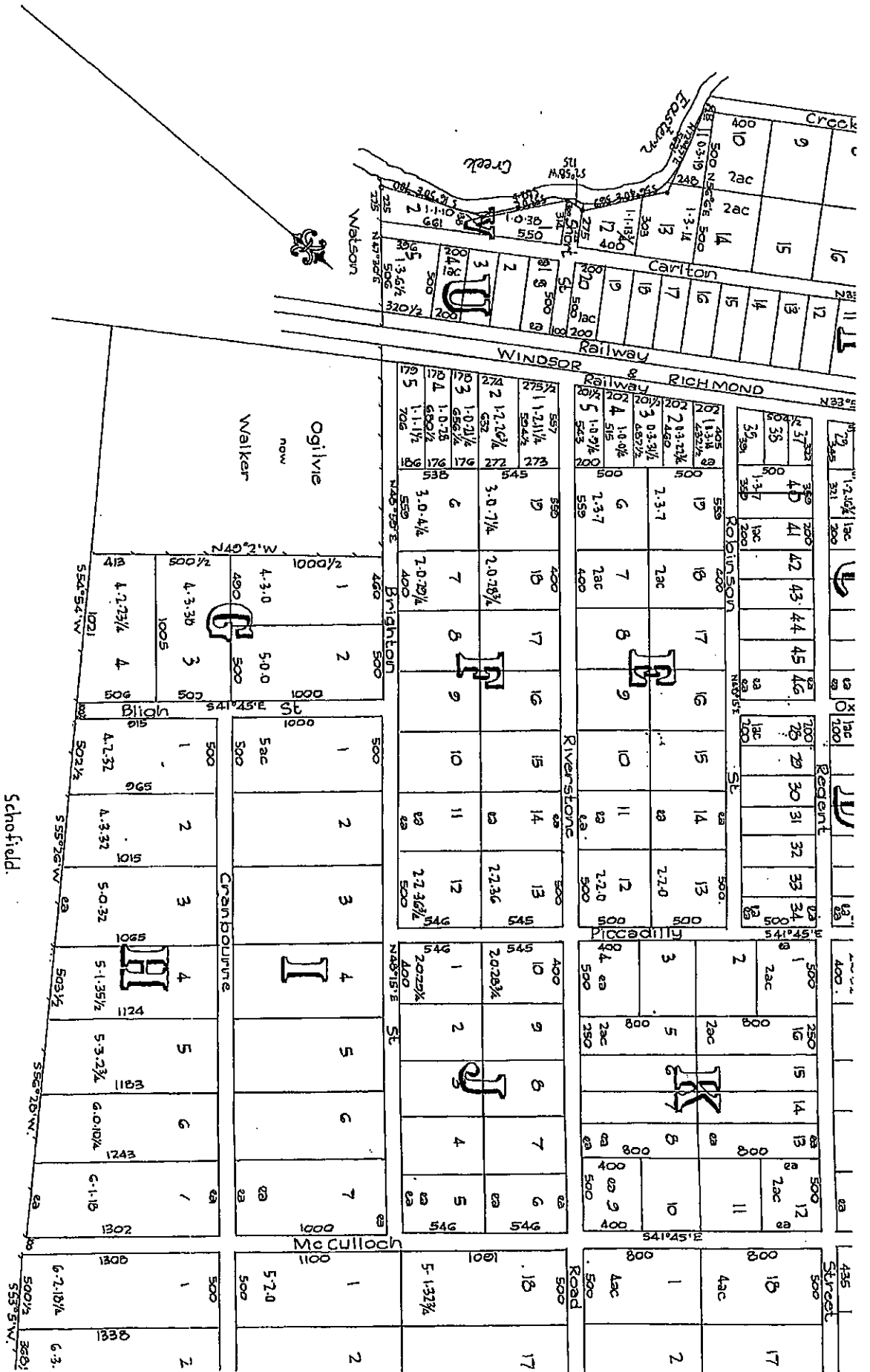
AT RIVERSTONE IN THE PARK

Scale: 6 Chains to one in

SUBDIVISION OF PART
RIVERSTONE E

D.P. 712.

DP 712 (E)



1" = 100'

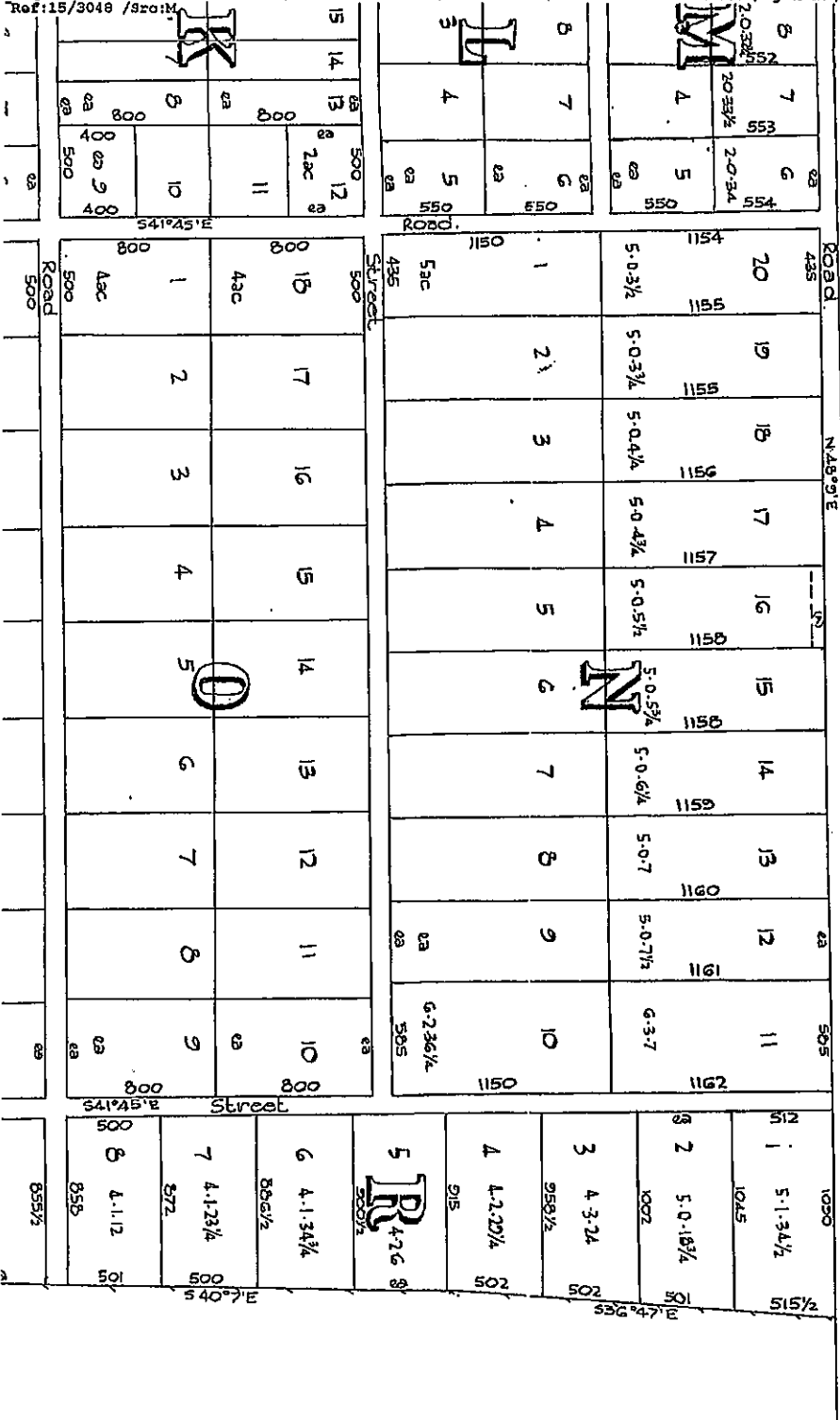
SECTION OF PART OF THE

STONE ESTATE

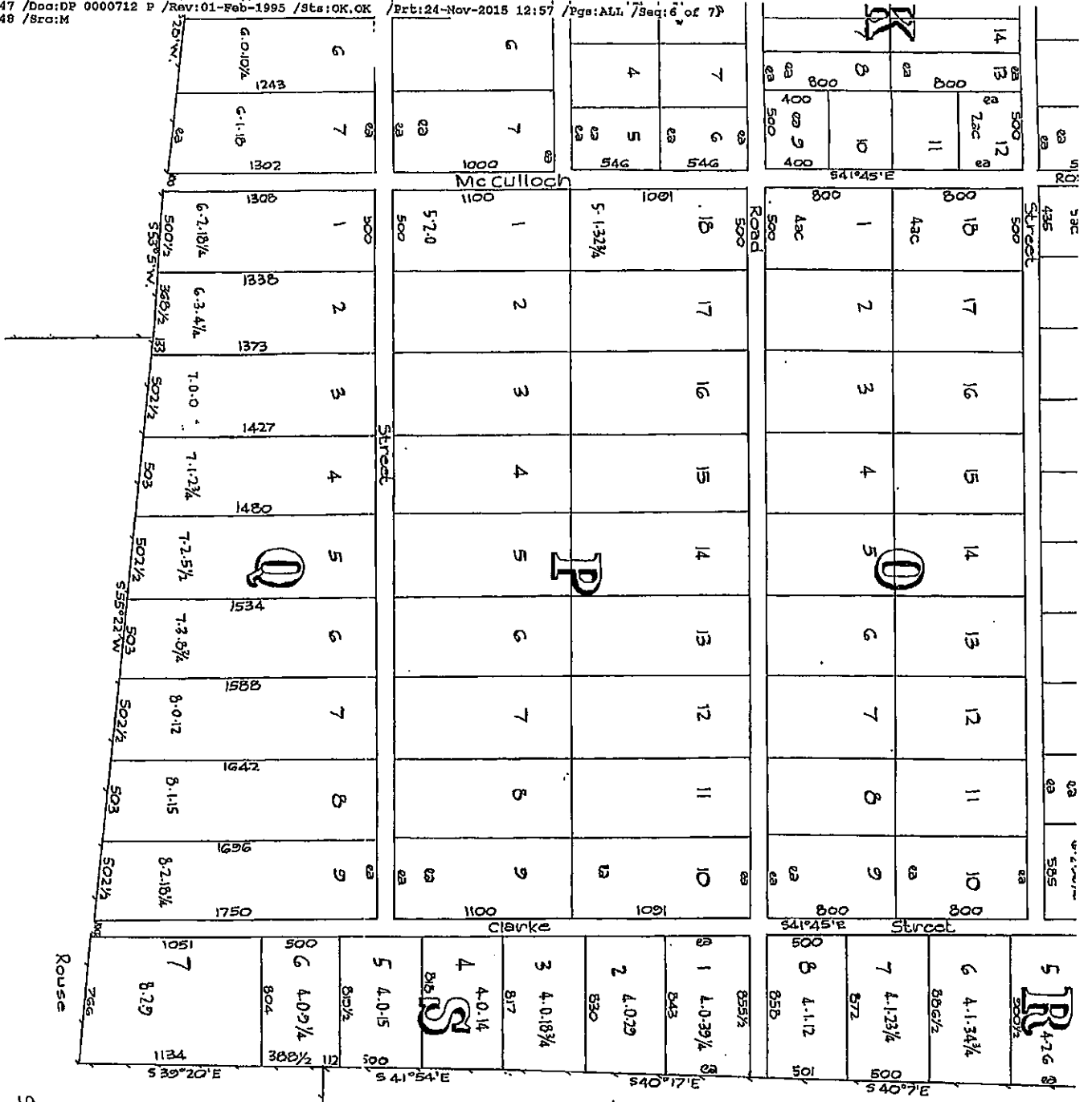
NE IN THE PARISH OF GIDLEY

Scale: 6 Chains to one inch

D.P.712 (E) (copy)



(A) RESTRICTIONS ON USER - M49B165



(A) RESTRICTIONS ON USER - 1744165

Signed: N. H. Binsted Licensed Surveyor
 Declaration Dated 13th September 1881.

DP 712 (E)